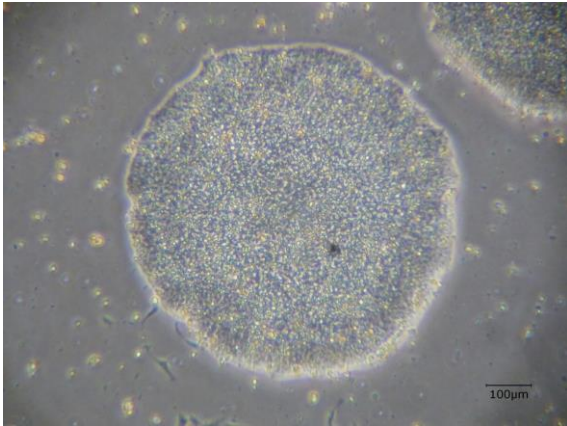
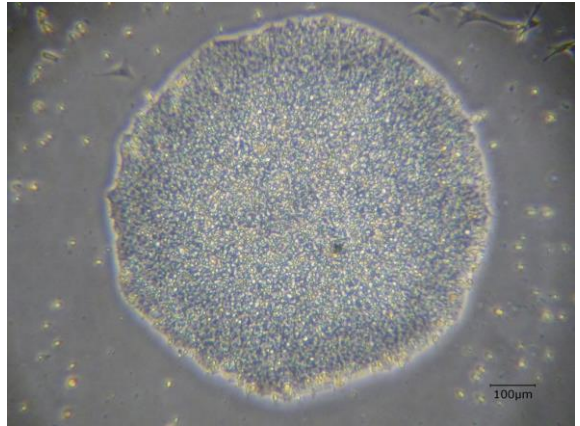


【 CiRA-j-1139 】 Morphology of iPSC colonies

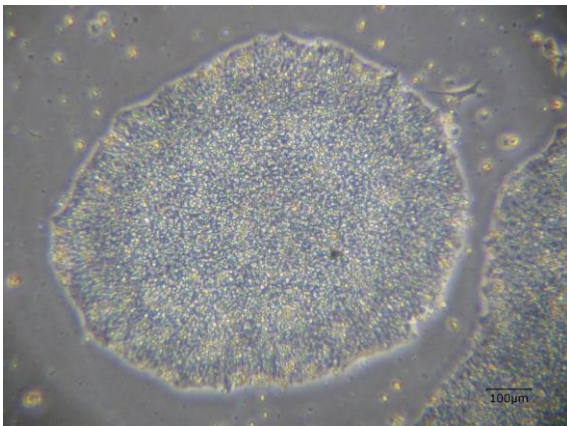
CiRA-j-1139-A: passage-3



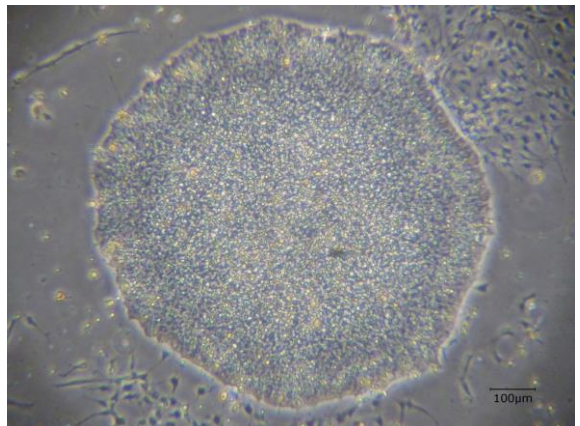
CiRA-j-1139-B: passage-3



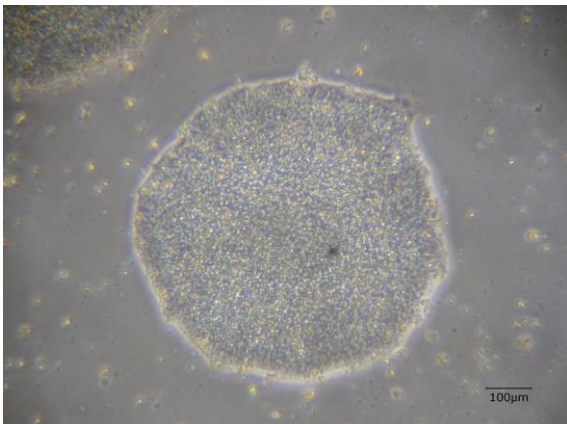
CiRA-j-1139-C: passage-3



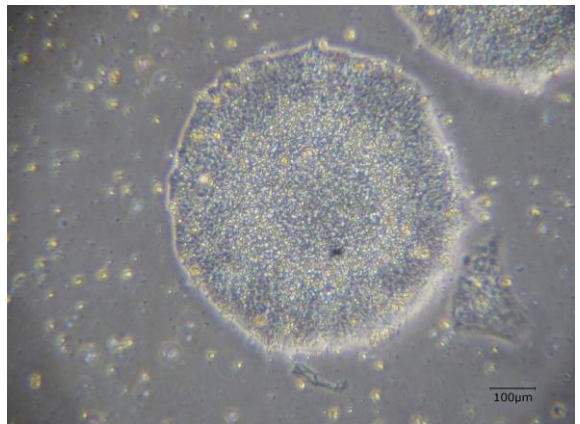
CiRA-j-1139-D: passage-3



CiRA-j-1139-E: passage-3



CiRA-j-1139-F: passage-3



(All images were captured at 4x magnification)